

***ECLIPSE
CROSS***

QUICK GUIDE



**MITSUBISHI
MOTORS**

A few tips to get you started!

Contents

2.	A few tips to get you started
3.	Starting the Vehicle
4.	Around the Centre Console
5.	Around the Centre Console / Around the Steering Wheel
8.	Smartphone Display Audio (SDA) Screen's Overview
9.	SDA Connections and Quick Tips
10.	Advanced Safety Systems

This quick guide has been prepared to help you enjoy safe and comfortable driving.

This quick guide is a short version of the owner's manual. For more details, please refer to the owner's manual.

This quick guide covers a range of specifications and manufacturer's options, so some of the descriptions may not apply to your Eclipse Cross model.

Congratulations on purchasing your new *ECLIPSE CROSS* Here are a few important things you need to know:

1. Your vehicle takes 91 unleaded fuel, available at any service station.
2. Your first service is at 1,500km or within one month. But don't worry if you forget, we'll be in contact to remind you!
3. Only have your Eclipse Cross serviced by a recognised Mitsubishi Motors dealer, for a list of dealers visit mmnz.co.nz/find-a-dealer/

Wherever your road takes you, we'll be right there with you. It's part of our commitment to ensuring you enjoy complete driving pleasure. Nothing demonstrates this commitment better than our unique Diamond Advantage package.

Mitsubishi's Diamond Advantage combines our 10-year or 160,000km (whichever occurs first) Powertrain Warranty*, a 5-year or 130,000km (whichever occurs first) new vehicle warranty* and 5-years roadside assist, to cover you in the unlikely event of a breakdown*.

*Please refer to your warranty booklet for full terms and conditions.



10 | **5**
YEAR | YEAR
**DIAMOND
ADVANTAGE**

Starting the Vehicle

The keyless operation system allows you to lock and unlock the doors and tailgate, start the engine and change the operation mode simply by carrying the keyless operation key with you.

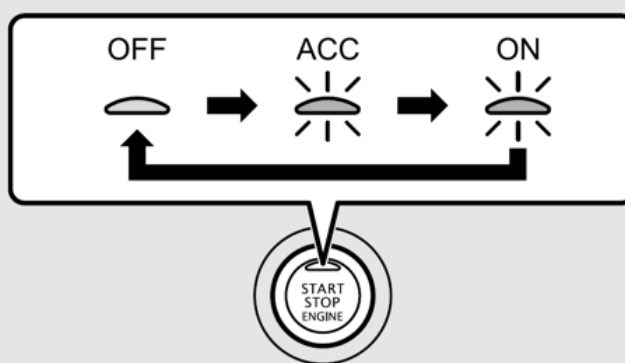
- Step 1** Make sure the parking brake is applied
- Step 2** Press and hold the brake pedal down firmly
- Step 3** Make sure the selector lever is in the "P" (PARK) position
- Step 4** Press the start/stop engine switch
- Step 5** Make certain that all warning lamps are functioning properly

ACC Mode:

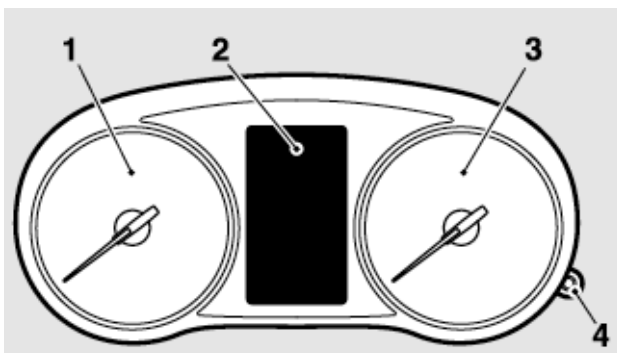
ACC mode allows electrical devices such as the audio and accessory sockets to operate. The indicator lamp on the engine switch will illuminate orange.

You can put the vehicle in ACC mode from "OFF" by pushing the Start/Stop engine button once without your foot on the brake pedal.

To put the vehicle in ACC mode from "ON", press the Start/Stop engine button while the gear shift lever is in Neutral.



Instrument Cluster



1. Tachometer
2. Multi-information Display
3. Speedometer
4. Meter illumination control

Multi-information Meter Switch

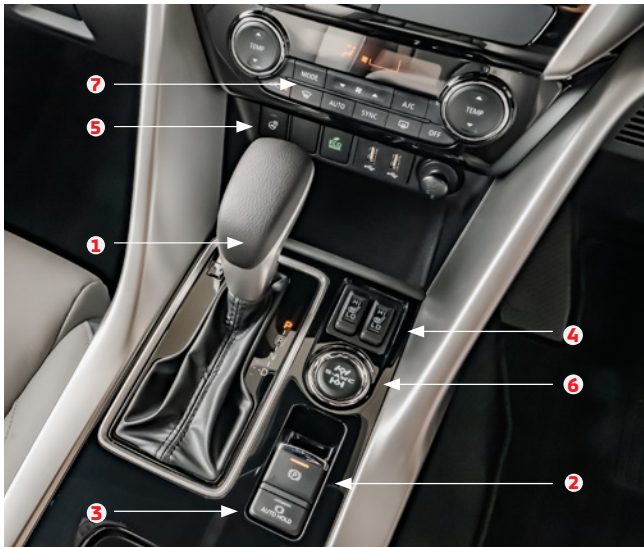
(Located to the right hand side of the steering wheel)

Each time the multi-information arrows are operated, the buzzer sounds and the multi-information display changes between information such as warnings, trip meter, average and instant fuel consumption, distance range.

It is also possible to change elements such as the language and units used on the multi-information display by operating the multi-information meter switch and arrows.



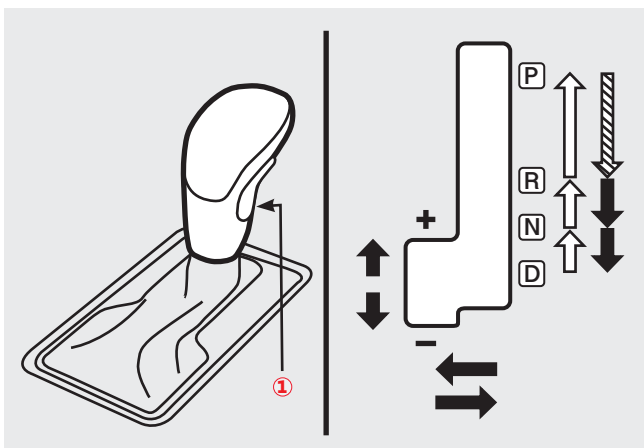
Around the Centre Console



01 Selector Lever - P,R,N,D

P (Park)	Locks the transmission to prevent the vehicle from moving.
R (Reverse) :	The vehicle moves in reverse.
N (Neutral) :	No drive is transmitted to the wheels, which are not locked either.
D (Drive) :	The vehicle moves forward.
Sports Mode +/-:	Allows for manual changing of the gears. The gears can also be manually changed by shifting up or shifting down with the paddles on the back of the steering wheel.

- Select position you chose is illuminated on the multi-information display.



1: Lock Button

	The lock button must be pushed while the brake pedal is depressed to move the selector lever.
	The lock button must be pushed to move the selector lever.
	The lock button does not need to be pushed to move the selector lever.

02 Electrical Parking Switch

Pull the switch up to lock the wheels when you are parking your vehicle. The indicator lamp on the switch illuminates in red.

03 Brake Auto Hold Switch

When the vehicle is stopped by depressing the brake pedal with the select position in any position other than 'P' (PARK) or 'R' (REVERSE), the system activates and the vehicle can be held stationary even if you release your foot from the brake pedal.

The brake auto hold indicator lamp in the instrument cluster will come on while the system activates.

When the accelerator pedal is depressed, the brakes are released. Pressing the switch while all of the following conditions are met, the brake auto hold system will change to the standby state and the indicator lamp on the switch comes on.

- The operation mode of the power switch in ON.
- The driver's seat belt is fastened.
- The driver's door is closed.

04 Heated Seats*

The front heated seats can be operated when the vehicle is ON. There are 3 settings for the heated seats (HI, OFF and LOW)

HI	Heater high (for quick heating)
OFF	Heater off
LOW	Heater low (to keep the seat warm)

05 Steering Wheel Heater*

The heated steering wheel will warm the grip portions of the left and right on the steering wheel by internal heaters. The heated steering wheel can be operated when the operation mode is ON.

06 S-AWC (Super-All Wheel Control)*

S-AWC is an integrated vehicle dynamics control system that helps enhance driving performance, cornering performance, and vehicle stability over a wide range of driving conditions through integrated management of the electronically controlled 4WD, the AYC, the ABS and ASC.

S-AWC Drive Mode	Function
NORMAL	This mode controls driving/braking torque between front right and front left wheel and between front and rear wheel according to the driving condition, and achieves low fuel consumption and agile driving.
SNOW	This mode is suitable for the snow road. Stability improves on a slippery road.
GRAVEL	This mode is suitable mainly for driving on unpaved or rough roads. This mode provides 4WD high driving performance and stable cornering performance.

*if so equipped

Around the Centre Console / Around the Steering Wheel

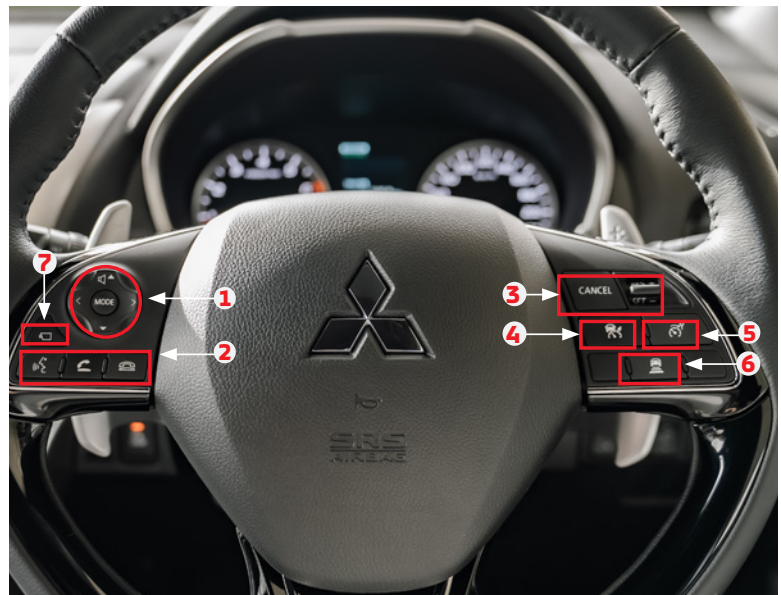
07 AC Settings



- 1 - Passenger's side temperature control switch
- 2 - MODE switch (change air flow direction)
- 3 - Blower speed selection switch
- 4 - A/C switch
- 5 - Driver's side temperature control switch
- 6 - Air selection switch (recirculate on/off)
- 7 - Front window demister switch
- 8 - AUTO switch
- 9 - SYNC switch (Syncs driver's side & passenger's side temperature)
- 10 - Rear window demister switch
- 11 - OFF switch

Around the Steering Wheel

- 1 - Audio Controls
- 2 - Handsfree Phone Controls
- 3 - Adaptive Cruise Control/Speed Limiter "RES+/" "SET-" and Cancel Switch
- 4 - Adaptive Cruise Control On/Off Switch
- 5 - Speed Limiter On/Off Switch
- 6 - Adaptive Cruise Control Distance Switch
- 7 - Multi Around View Monitor *



To activate Adaptive Cruise Control press the Adaptive Cruise Control on/off switch (4) once. Adjust the desired speed by pushing the toggle switch (3) up (to increase) or down (to decrease). To deactivate Adaptive Cruise Control, press the cancel switch (top left) or the on/off switch once again.

You can change the following distance by pressing the Adaptive Cruise Control Distance Switch (6) once to cycle through the following distance settings.

Multi Around View Monitor*

The Multi Around View Monitor is a system that shows the view combined with the four cameras on the Smartphone-link Display Audio system. It assists drivers to park their vehicle in the parking spaces and to parallel park their vehicle.

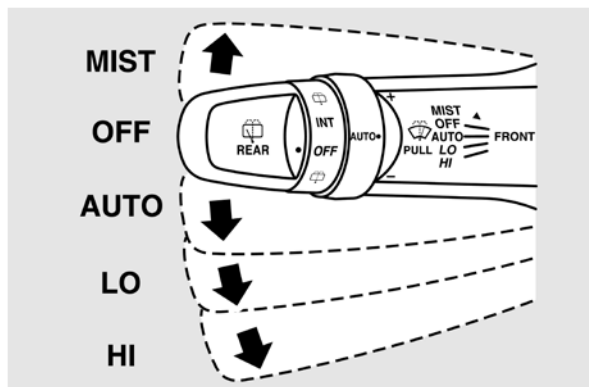
Each time the camera button (7) is pressed, the Multi Around View Monitor cycles through the different camera options.



Around the Steering Wheel

Windscreen Wipers

Rotate the stalk to change the windscreen wiper function

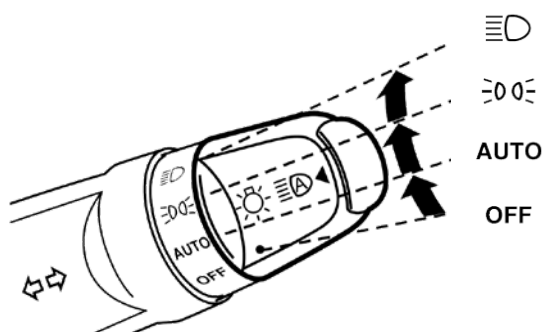


MIST	↑	Misting function The wipers will operate once.
OFF	•	Off
AUTO	↓	Auto-wiper control Rain sensor The wipers will automatically operate depending on the degree of wetness on the windscreen.
LO	↓↓	Slow
Hi	↓↓↓	Fast

Quick Tip: You can adjust the sensitivity of the windscreen wipers when it is in "AUTO" by rotating the "AUTO" ring.

Headlamps

Rotate the switch to turn on the lamps



The angle of the headlamp beam varies depending upon the load carried by the vehicle. You can adjust this angle by using the headlamp leveling switch.

OFF	All lamps off
AUTO	When the ignition switch or the operating mode is in ON, headlamps, position, tail, licence plate, and instrument panel lamps turn on and off automatically in accordance with outside light level. All lamps turn off automatically when the ignition switch is turned to "LOCK" position or the operation mode is put in OFF.
⏏	Position, tail, licence plate and instrument panel lamps on
⏏	Headlamps and other lamps go on
	Auto High Beam (AHB) - The AHB switches between the headlamp beams (high/low) when the sensor senses light from a vehicle in front, an oncoming vehicle or street lamps. For the AHB to operate, the headlamp position must be switched to the "AUTO" when the engine is running.*

Other Buttons

- 1 - Head Up Display Settings*
- 2 - Active Stability Control
- 3 - Lane Departure Warning
- 4 - Forward Collision Mitigation Settings
- 5 - Parking Sensor Button (SONAR)



Parking Sensor Button (SONAR)

(located to the left hand side of the steering wheel)

The parking sensors can be turned on or off by pressing the "SONAR" button once. When the orange light is on, the system is activated. If there is an obstacle within the vicinity of the vehicle, a warning will be issued on the multi information display and a warning buzzer will sound.



Around the Steering Wheel

Shift Paddles (Sports Mode)

You can use the shift paddles (sports mode) to manually adjust the gear ratio of the vehicle

+ (Shift Up) - The transmission shifts up one gear by each operation

- (Shift Down) - The transmission shifts down one gear by each operation

To return to D (Drive) pull the + (Shift Up) shift paddle for 2 seconds



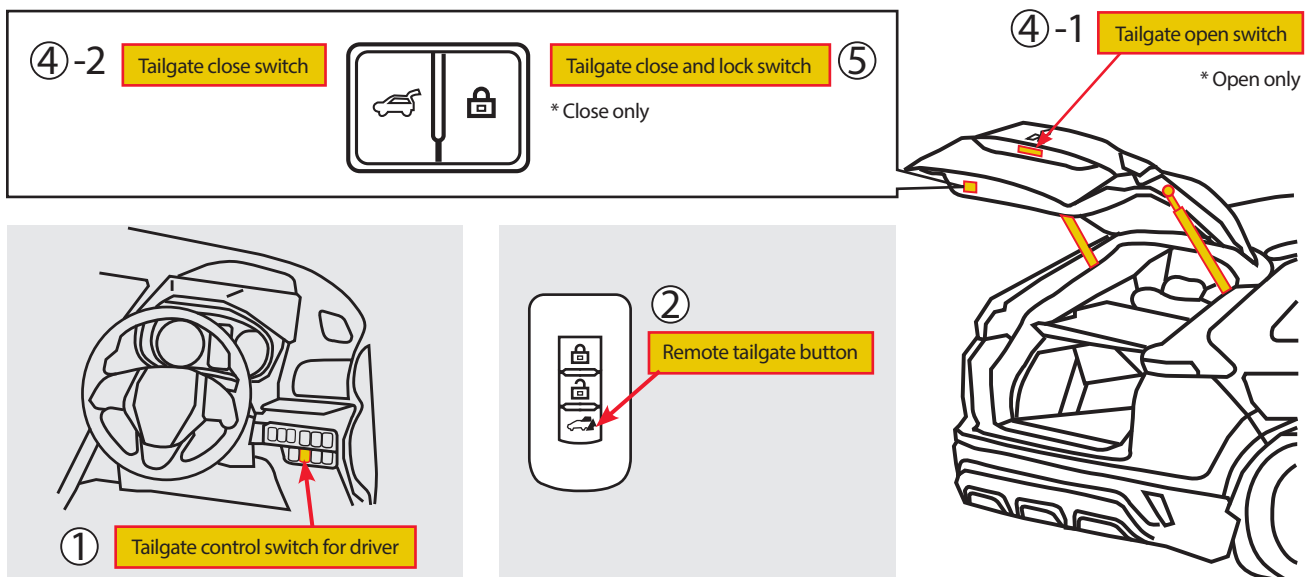
Head Up Display*

The Head Up Display (HUD) shows information on a transparent display so that you can easily check the meter information (vehicle speed, Adaptive Cruise Control settings, etc.) when driving.

To turn the HUD system on/off, press the HUD button located to the right hand side of the steering wheel. You can also adjust the angle (by pressing the up/down button to the left of the HUD button) or adjust the brightness (by pressing the up/down button to the right of the HUD button)



Power Tailgate*



- Can open/close the tailgate with:
 - ① Tailgate control switch for driver or ② Remote tailgate button
- Can open the tailgate with ④-1 Tailgate open switch
- Can close the tailgate with ④-2 Tailgate close switch
- Can close the tailgate and lock the car with ⑤ Tailgate close and lock switch

Quick Tip:

You can change the memory set height by following these steps:

1. Open the tailgate
2. Hold tailgate at desired height
3. Press and hold the tailgate close switch ④-2 for 3 seconds or until it beeps
4. Next time you operate the power tailgate function, the tailgate will open to the set height

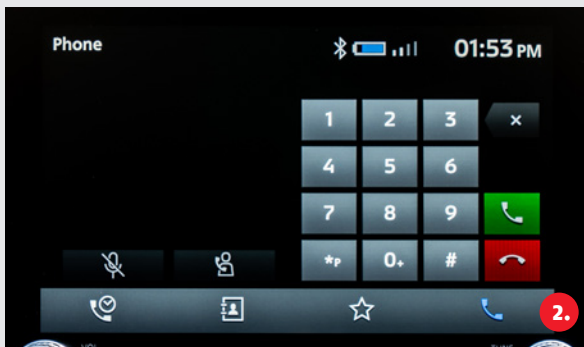
Smartphone Link Display Audio (SDA) Screen Overview

Home Screen

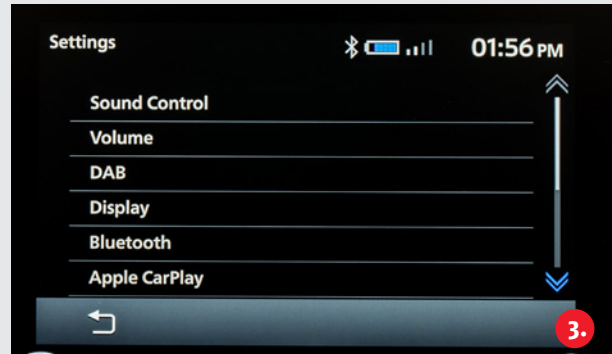
- 1. Multimedia
- 2. Phone
- 3. Settings
- 4. Info
- 5. Apps/Android Auto/Apple CarPlay



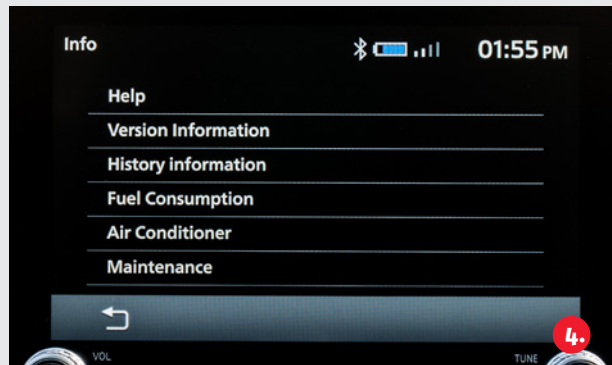
Allows playback using radio or various other media



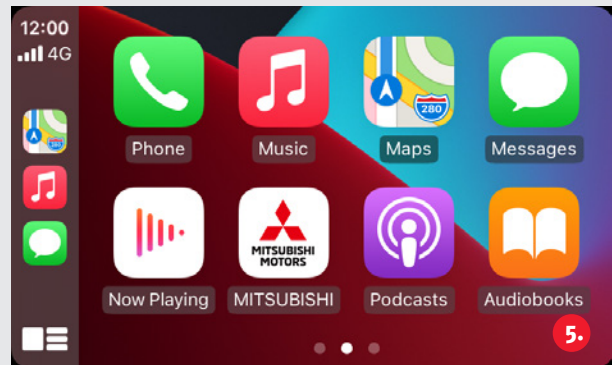
Connecting your mobile phone with Bluetooth lets you use the hands-free phone system



Changes settings such as sound control, Bluetooth connections and volume



Allows you to check information such as trip information and air conditioning status



Apple CarPlay/Android Auto can be used by connecting a compatible phone via a USB cable

For further information on the various SDA screens, refer to your SDA Owners Manual



SDA Connections and Quick Tips

How to connect a compatible smartphone via Bluetooth?

1. Display the "settings" menu on the SDA screen
2. Tap "Bluetooth"
3. Tap "Device Management"
4. Select the search icon and follow on screen instructions

How to make a call when phone is connected via Bluetooth

1. Press the "phone" key
2. Select either "call history", "contacts" or "telephone keypad"
3. Press on the contact you wish to call or enter a phone number then select "dial"

How to select a Bluetooth device once connected?

1. Display the "settings" menu on the SDA screen
2. Tap "Bluetooth"
3. Tap "Device Management"
4. Tap the name of the device you want to connect to by either selecting the phone icon (for hands-free phone access) or the media icon (for Bluetooth audio access)

Apple CarPlay/Android Auto



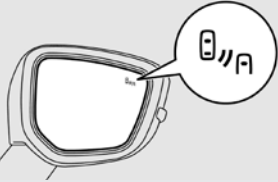
Plug in your compatible Apple or Android phone via USB and follow the on screen instructions selecting either:

1. Enable this time – this will enable Apple CarPlay/Android Auto for one time then will ask again the next time
2. Always enable – this will enable Apple CarPlay/Android Auto each time your phone is connected

Quick Tip: In the "Bluetooth" screen, you can connect one phone to Bluetooth music and one phone to Handsfree phone by selecting the media/phone icon on the SDA screen for the two different Bluetooth connections.



Advanced Safety Systems

Advanced Safety System	Description	How to adjust/ turn system on/off
<p>Forward Collision Mitigation (FCM)</p> 	<p>When your vehicle is approaching a vehicle or a pedestrian straight-ahead in your path and the FCM judges that there is the risk of a collision, the system will give audible and visual warnings, increases the brake fluid, and also provides braking force assistance when you depress the brake pedal to avoid frontal collision.</p> <p>When the risk of collision increases more, the system causes the brakes to work moderately to encourage you to apply brakes. If the system judges that a potential collision is imminent, it initiates emergency braking to mitigate collision-caused damages or to avoid possible collision</p>	<p>Press and hold the FCM button to the right of the steering wheel to turn the system ON/OFF.</p> <p>The FCM system can also be adjusted by pressing the FCM button once to cycle through the sensitivity of the system.</p>
<p>Lane Departure Warning (LDW)</p> 	<p>When your vehicle is likely to drift from its lane, an audible alarm sounds and a visual alarm is displayed on the information screen of the multi-information display.</p>	<p>To turn off LDW, press the LDW button once – The LDW icon on the multi-information display will be removed. To turn the system back on, press the button again.</p>
<p>Blind Spot Warning (with Lane Change Assist)</p> 	<p>The Blind Spot Warning (BSW) is a driving aid system that alerts the driver when another vehicle which may not be visible through the outside rear-view mirror is travelling in the next lane behind your vehicle.</p> <p>When a vehicle in the next lane is travelling at same speed or faster in the detection areas, the BSW lamp in the corresponding outside rear-view mirror will illuminate. If the turn signal lever is operated to the side where the BSW lamp is illuminated, the BSW lamp will blink and the system will beep 3 times to alert the driver.</p>	<p>To turn the BSW safety system ON/OFF, switch the multi-information display to the "Settings" tab by using the up/down arrows to the right of the steering wheel. Scroll down to "BSW" and turn the system ON/OFF</p>
<p>Rear Cross Traffic Alert</p>	<p>The Rear Cross Traffic Alert (RCTA) is an aid system for backing up. When the RCTA system detects vehicles approaching from the sides while your vehicle is reversing, the Blind Spot Warning lamps in the outside rearview mirrors on both sides will blink and a buzzer will sound to alert the driver.</p>	<p>The RCTA system will be turned on/off when the Blind Spot Warning (with Lane Change Assist) system is turned on/off.</p>

www.mmnz.co.nz

08/2023

